

## **Augment Automotive Technical Manual**

Title: Augment Automotive Serial Connection Manual

Document Number: AUG/MAN/004  
Version: 002  
Author: Tom Barker  
Date: 8 September 2013



## Scope

This purpose of this document is help users connect to Augment Automotive products for configuration, monitoring or control purposes.

## Connecting via USB on a Windows 7 Laptop

Many Augment Automotive products use serial connections for communications. Serial connections are generally no longer present on laptops and serial to USB converters are commonly used to connect modern devices e.g. laptops to devices using serial communications. Most Augtronic Devices with a USB connection have an inbuilt serial to USB converter.

Connecting involves a number of steps:

- Physically connecting the two devices
- Installing the drivers for the serial to USB converter
- Choosing a COM port number
- Testing the connection

Once the devices are physically connected via the provided cable, typically a USB cable the Windows operating system should detect the presence of a new device and try and install the drivers. Drivers for the serial to USB converter used in most Augment Automotive products can be found at <http://www.augmentautomotive.co.uk/files>. There are two drivers one for 64-bit operating systems and one for 32-bit operating systems. If you click start, right click on My Computer and click properties you should get the following screen:

## View basic information about your computer

### Windows edition

Windows 7 Home Premium

Copyright © 2009 Microsoft Corporation. All rights reserved.

Service Pack 1

[Get more features with a new edition of Windows 7](#)



### System

Manufacturer: Samsung Electronics

Rating: **3.1** Windows Experience Index

Processor: Celeron(R) Dual-Core CPU T3100 @ 1.90GHz 1.90 GHz

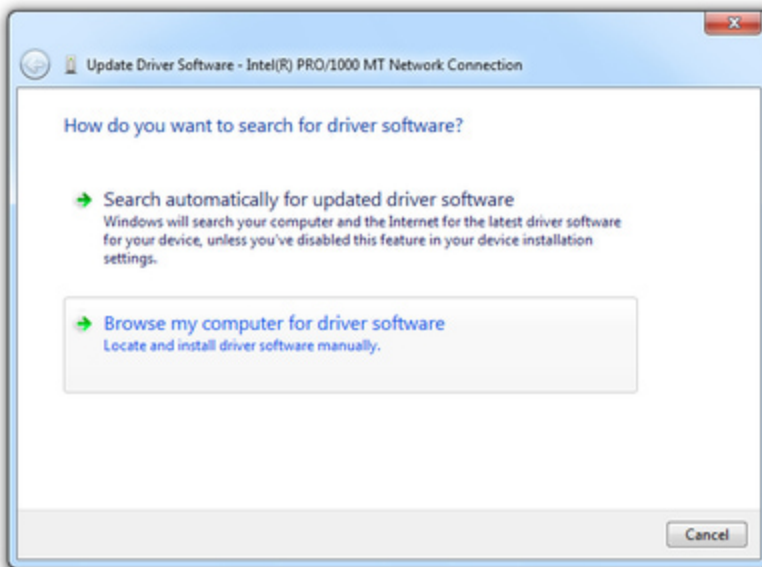
Installed memory (RAM): 4.00 GB (2.93 GB usable)

System type: **32-bit Operating System**

Pen and Touch: No Pen or Touch Input is available for this Display

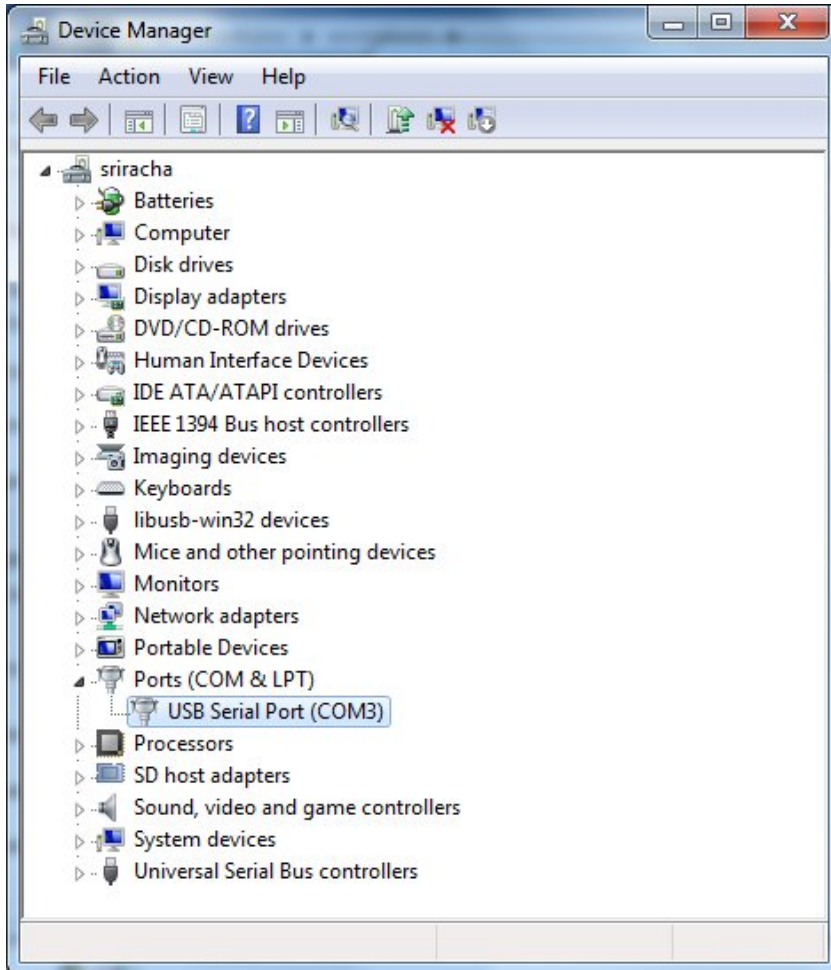


The 'System type:' field will state if you have a 32 or 64-bit operating system. Select the driver accordingly. Once downloaded the driver should be extracted to a folder in a known location so that it can be used by the operating system. The operating system may already have the driver for the serial to USB converter or if connected to the Internet may be able to download it automatically. If not the operating system should present you with window to install the driver software. Proceed through the setup procedure selecting 'Browse my computer for driver software' when available.



Select the folder where you extracted the drivers for the USB to serial converter.

Once the installation is complete the operating system should have created a COM port and assigned it a number which will be used to connect to the device. Opening 'Device manager' which can be found in control panel, or via the search box on the start menu will give a list of devices.



Some computers may have multiple ports listed. Look for one names 'USB serial port' or similar and note the number assigned. In the case above it is 'COM3'.

**Note when using 3D tuner versions 1.14 or below:** If the com port is not in the range 1-9 then it must be changed to a number in the range 1-9. This is done by right clicking on the serial port, clicking properties, selecting the port settings tab, clicking the 'Advanced' button and selecting a port in the range 1-9 from the list and clicking ok. You may be warned that the port number is already in use. If you are using COM ports for other devices this may cause problems, if not then it should not cause any issues. If you do have to change the com port it is recommended that the machine is rebooted if there are any problems connecting. Disconnecting the cable may also help with issues. This COM port can now be used by Augment Automotive applications.